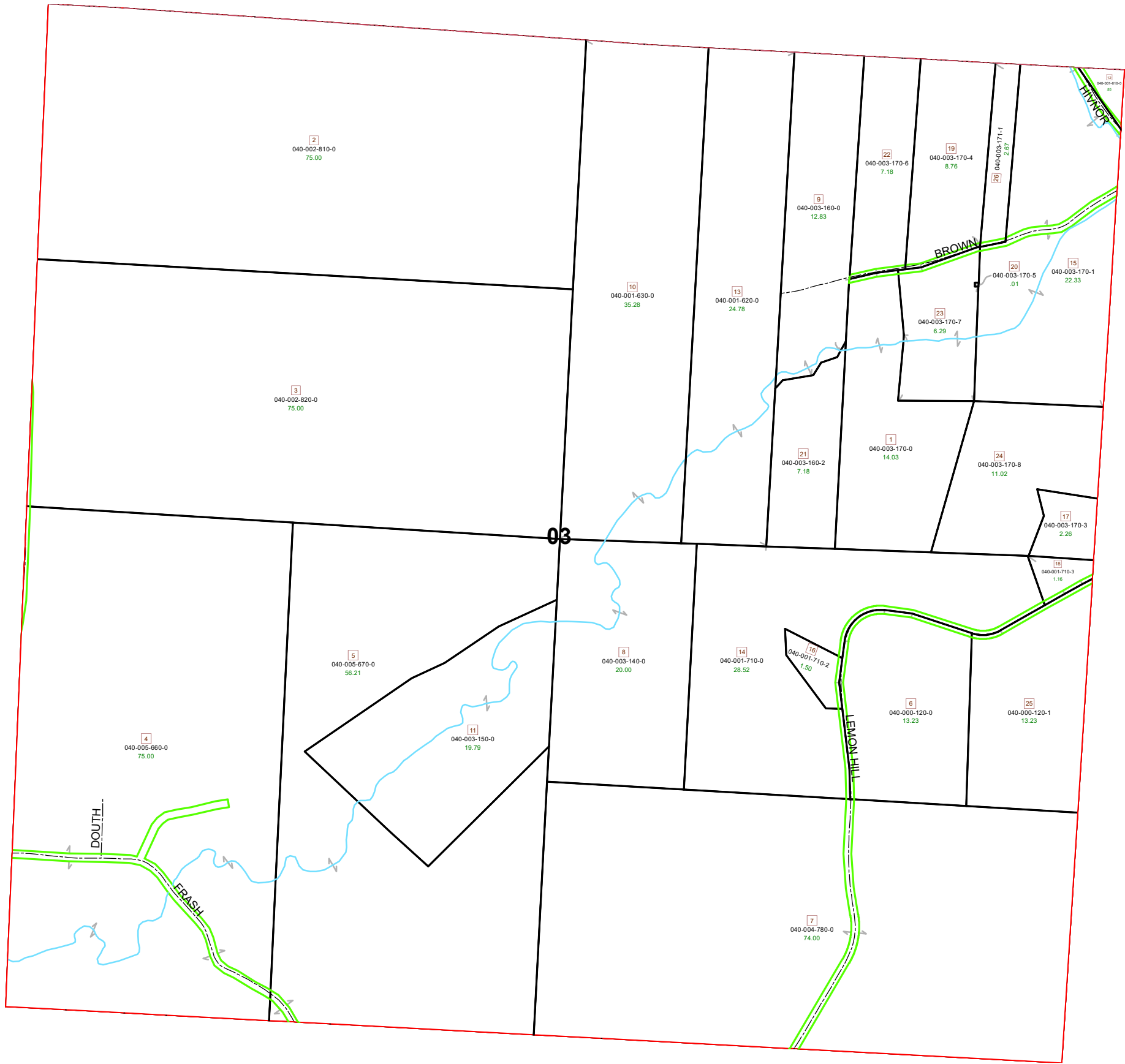
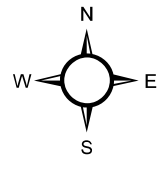


DEERFIELD TOWNSHIP SECTION 03 R13- TWP 9 MORGAN COUNTY, OH

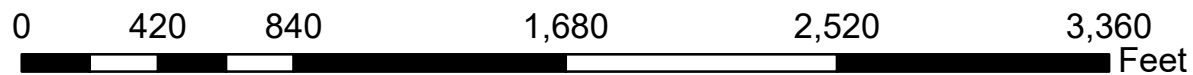


PIN	VOL	PAGE	Owner	LegalDescr	Acres
040-003-150-0	OR232	5924	BROWN CHARLES E & LEONE A FAMILY TRUST	R13 T09 S03 SD 11 SU	19.79
040-003-140-0	OR232	5924	BROWN CHARLES E & LEONE A FAMILY TRUST	R13 T09 S03 SD 8 SUR	20
040-002-820-0	OR177	740	CLARK TIM	R13 T09 S03 SD 3	75
040-002-810-0	OR177	740	CLARK TIM	R13 T09 S03 SD 2	75
040-000-120-1	OR130	785	CLAWSON DANA	R13 T09 S03 SD 25	13.232
040-000-120-0	OR204	2333	CLAWSON GORDON E	R13 T09 S03 SD 6	13.232
040-004-780-0	OR200	12	DAY SPRING FARM OF OHIO LLC	R13 T09 S03 SD 7	74
040-003-170-7	OR140	397	HILL CAROL	R13 T09 S03 SD 23	6.29
040-003-170-6	OR172	506	KOENIG JASON S & JENNIFER M	R13 T09 S03 SD 22 SU	7.18
040-003-160-0	OR172	506	KOENIG JASON S & JENNIFER M	R13 T09 S03 SD 9 SUR	12.833
040-001-620-0	OR68	205	LOFRUMENTO CHRISTIAN & DEBRA	R13 T09 S03 SD 13 EX	24.783
040-001-630-0	OR75	176	LOFRUMENTO CHRISTIAN & DEBRA	R13 T09 S03 SD 10 SU	35.28
040-003-160-2	OR206	3106	LOFRUMENTO CHRISTIAN & DEBRA E	R13 T09 S03 SD 21 SU	7.18
040-003-170-0	OR206	3106	LOFRUMENTO CHRISTIAN & DEBRA E	R13 T09 S03 SD 1 SUR	14.03
040-003-170-8	OR225	497	LOOKER THOMAS ALLEN & DOROTHY ANN ALIEX L	R13 T09 S03 SD 24	11.02
040-003-170-1	OR3	766	MAYS CYNTHIA	R13 T09 S03 S D 15	22.326
040-001-610-0	OR212	2983	NOLAND DENNIS	R13 T09 S03 SD 12	0.854
040-001-710-3	D.V 203	542	PENOTTE FRANCIS J & MARGARET M	R13 T09 S03 SD 18	1.159
040-003-170-3	D.V 203	542	PENOTTE FRANCIS J & MARGARET M	R13 T09 S03 SD 17	2.257
040-003-171-1	OR208	2950	SPARKS MARK & TOSHA L	R13 T09 S03 SD 26 SU	2.67
040-003-170-4	OR201	218	SPARKS MARK J & TOSHA L	R13 T09 S03 SD 19 SU	8.76
040-005-670-0	OR213	1529	STOVER TIM & STEPHANIE TRUST	R13 T09 S03 SD 5	56.21
040-005-660-0	OR213	1529	STOVER TIM & STEPHANIE TRUST	R13 T09 S03 SD 4	75
040-001-710-0	OR97	336	THORNTON JIM E & JEAN M	R13 T09 S03 SD 14 SU	28.524
040-001-710-2	OR217	802	THORNTON JIM L JR	R13 T09 S03 SD 16	1.5



Boundaries		Future Split	ROW
Type	Hydro	Section	
County	Lot	Township	
Parcel	Symbols	Parcels	
	Roads		

Source: Morgan County Engineer's Office
 Author: Marcia Wolfe
 Date: 5/8/2020



Disclaimer: The information that these maps contains is or reference purposes only. Please bring any erros to the attention of the Engineer's Office staff.
 Thank you